

LESTER P.U.D. - PLAT ONE

SITUATE IN THE SOUTHEAST ONE-QUARTER OF SECTION 35,
TOWNSHIP 45 SOUTH, RANGE 42 EAST, PALM BEACH COUNTY, FLORIDA.
SHEET 8 OF 9
JULY, 1999

0742-004

58

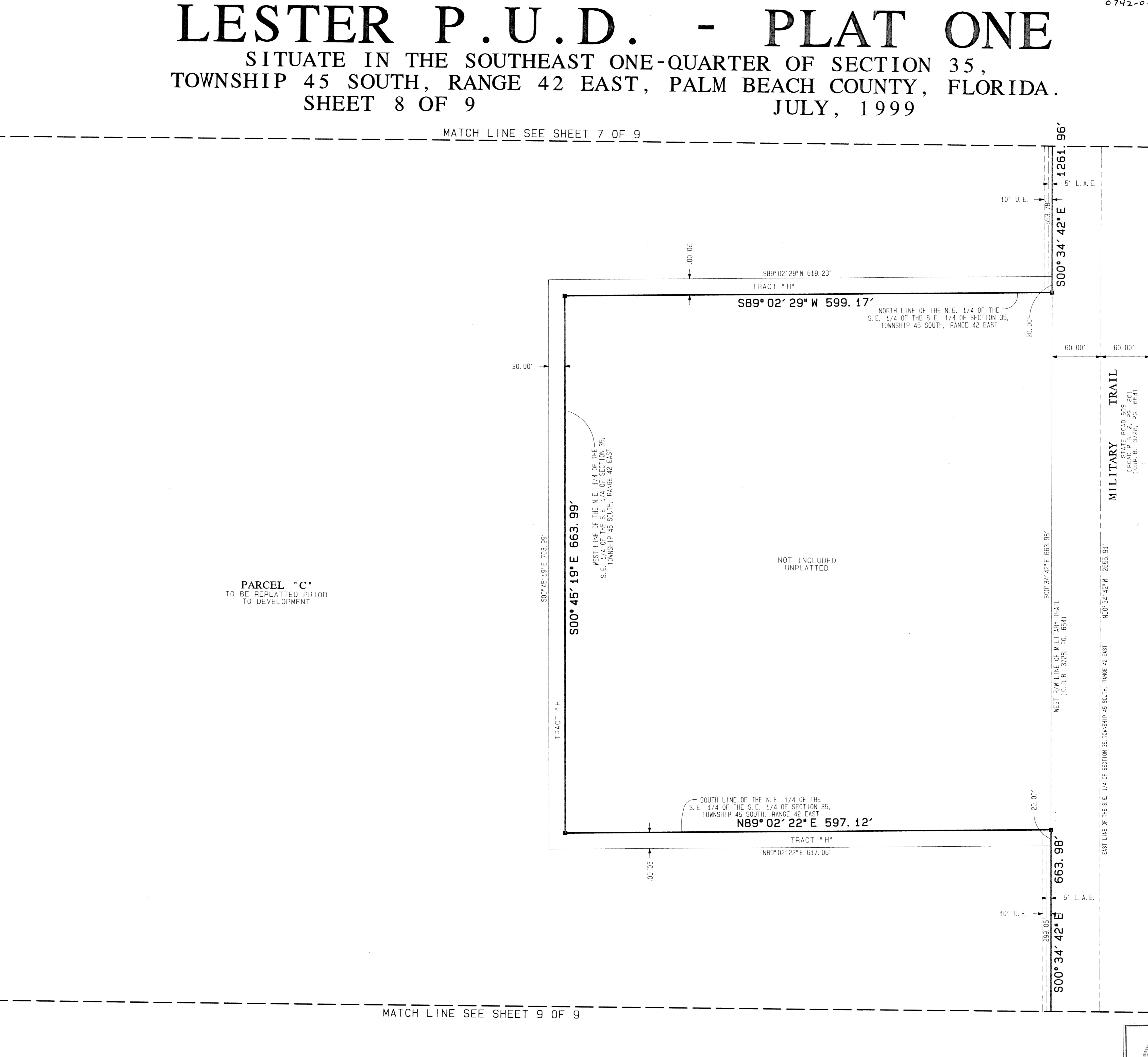
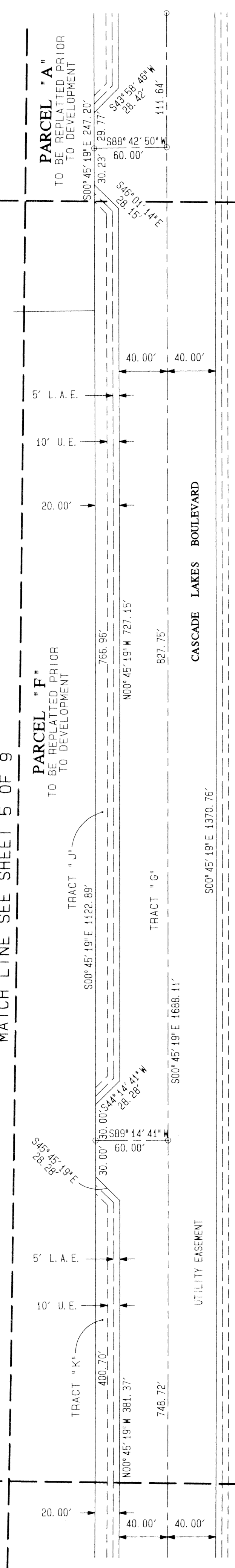
MATCH LINE SEE SHEET 7 OF 9

STATE OF FLORIDA } SS
COUNTY OF PALM BEACH }
THIS PLAT WAS FILED FOR
RECORD AT _____ DAY OF
THIS _____ AD, 1999 AND
DULY RECORDED IN PLAT BOOK
_____ ON PAGES _____ AND

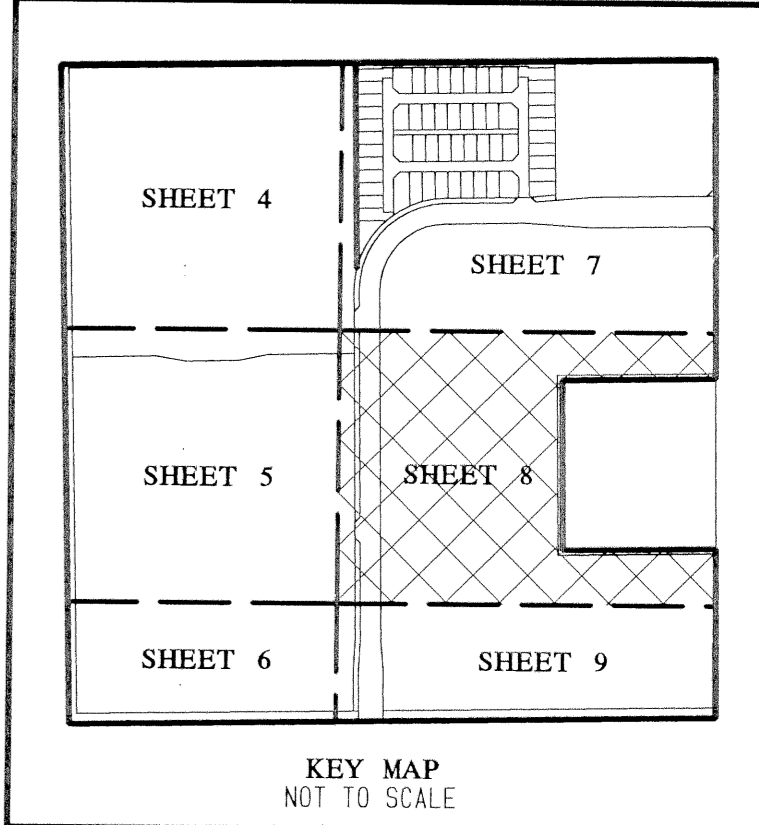
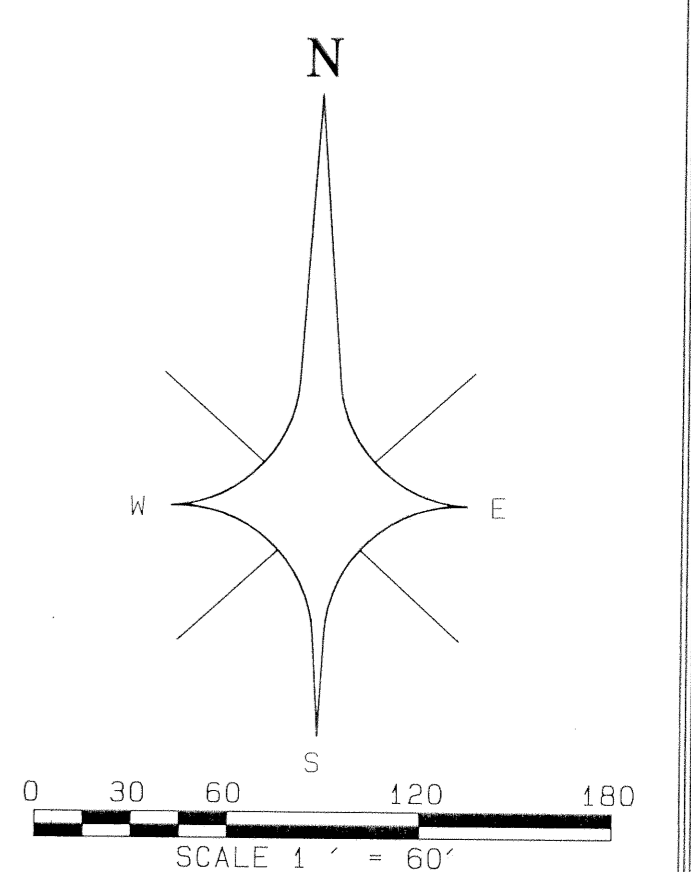
DOROTHY H. WILKEN, CLERK
CIRCUIT COURT
BY: _____ DC

MATCH LINE SEE SHEET 5 OF 9

MATCH LINE SEE SHEET 9 OF 9



- LEGEND:
- Δ = CENTRAL ANGLE/DELTA
 - ⊙ = CENTERLINE
 - CH = CHORD
 - D.B. = DEED BOOK
 - D.E. = DRAINAGE EASEMENT
 - F.P.S.L. = FLORIDA POWER AND LIGHT COMPANY
 - A = ARC LENGTH
 - L.A.E. = LIMITED ACCESS EASEMENT
 - L.M.A.E. = LAKE MAINTENANCE ACCESS EASEMENT
 - L.M.E. = LAKE MAINTENANCE EASEMENT
 - L.W.D. = LAKE WORTH DRAINAGE DISTRICT
 - N.R. = NON-RADIAL
 - N.T.S. = NOT TO SCALE
 - O.R.B. = OFFICIAL RECORDS BOOK
 - P.B. = PLAT BOOK
 - PG. = PAGE
 - P.O.B. = POINT OF BEGINNING
 - P.O.C. = POINT OF COMMENCEMENT
 - R = RADIUS (RADII)
 - R.F. = RADIAL TO FRONT LOT LINE
 - R.R. = RADIAL TO REAR LOT LINE
 - R/W = RIGHT OF WAY
 - U.E. = UTILITY EASEMENT
 - W.C. = WITNESS CORNER
 - Z.L.L.M. = ZERO LOT LINE MAINTENANCE EASEMENT
 - ⊙ = PERMANENT CONTROL POINT (PCP)
PCP LB4820
 - = PERMANENT REFERENCE MONUMENT (PRM)
SET PRM LB4820



PROFESSIONAL
SURVEYORS
AND MAPPERS
LB4820

ATLANTIC - CARIBBEAN MAPPING, INC.
3062 JOG ROAD - GREENACRES, FLORIDA 33467
(561) 964-7884; FAX (561) 964-1969

PAGE # _____
FLORIDA # _____
ZONING _____
ZIP CODE _____
PLAT # _____
P.U.D. NAME _____